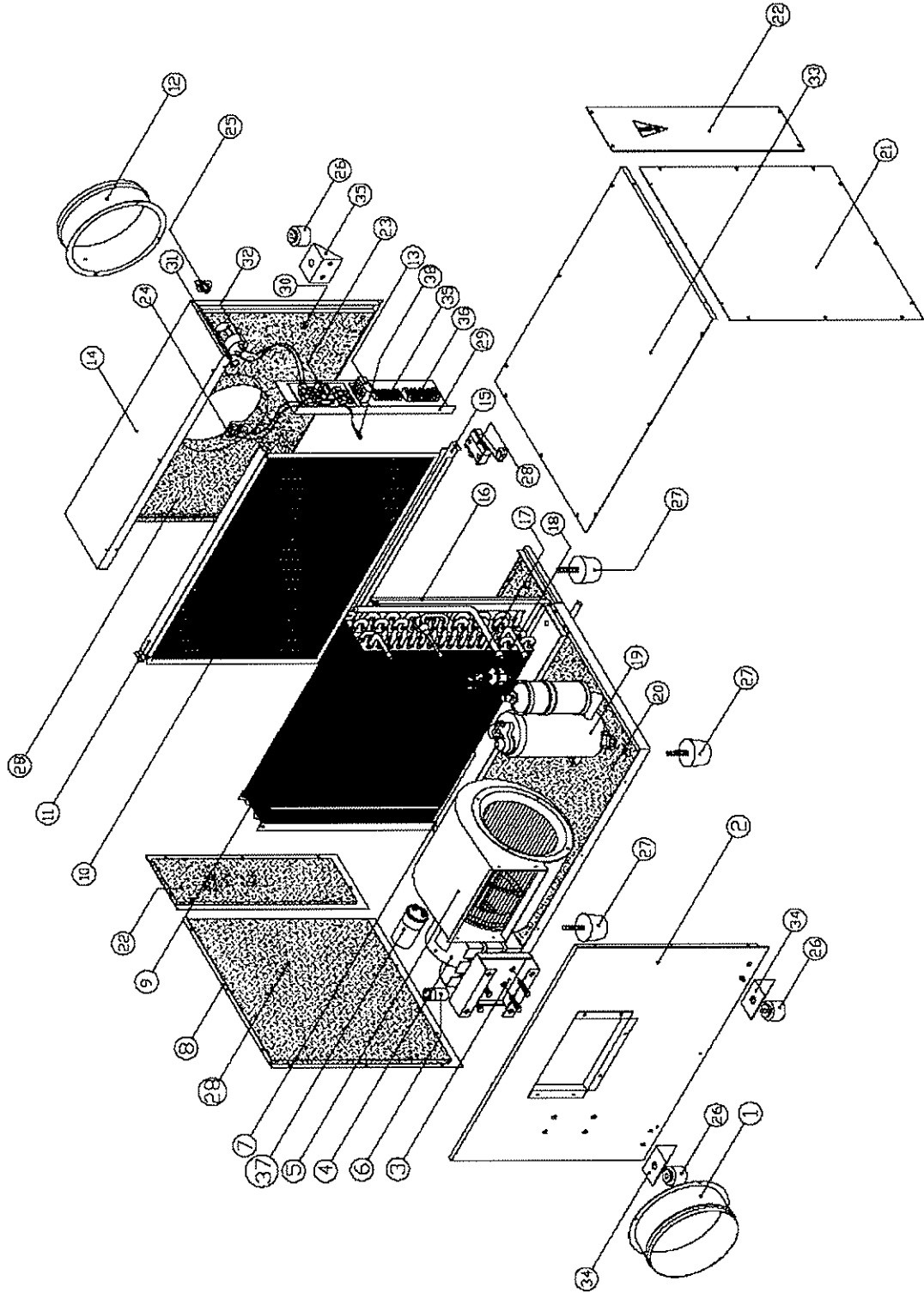


Whole House Dehumidifier

Exploded View



Whole House Dehumidifier

Parts List

| ITEM | GFI NUMBER | DESCRIPTION | QTY |
|--------|------------|--|-----|
| 1 | 7410 | D114 DUCT, SUPPLY | 1 |
| 2 | 7411 | VB14 PANEL, BLOWER SUPPLY w/ INSULATION | 1 |
| 3 | 7412 | BM14 BASE, MOTOR | 1 |
| 4 | 7413 | MT14 MOTOR - 115V, 1/10 HP, 3 SPD | 1 |
| 5 | 7414 | BW14 BLOWER SET (WHEEL, HOUSING & INLET) | 1 |
| 6 | 7415 | RC14 CAPACITOR, (MOTOR) | 1 |
| 7 | 7416 | DP14 DRAIN PAN (STAINLESS) | 1 |
| 8 | 7417 | SM14 PANEL SIDE w/ INSULATION | 1 |
| 9 | 7418 | CO14 COI | 1 |
| 10 | 7419 | FT14 FILTER, 431x 595 x 5 mm, NYLON | 1 |
| 11 | 7420 | UF14 UPPER GROOVE, FILTER | 1 |
| 12 | 7421 | DR14 DUCT, RETURN | 1 |
| 13 | 7422 | TR14 TRANSFORMER, 115-24VAC, 24VA | 1 |
| 14 | 7423 | VR14 PANEL, RETURN AIR w/ INSULATION | 1 |
| 15 | 7424 | LF14 LOWER GROOVE FILTER | 1 |
| 16 | 7425 | SR14 SUPPORT, SIDE PANEL RETURN AIR | 1 |
| 17 | 7426 | TX14 TEX VALVE | 1 |
| 18 | 7427 | FD14 FILTER DRIER | 1 |
| 19 | 7428 | CS14 COMPRESSOR | 1 |
| 20 | 7429 | BT14 BOTTOM PAN | 1 |
| 21 | 7430 | SD14 PANEL, SIDE w/ INSULATION | 1 |
| 22 | 7431 | SP14 PANEL, FILTER w/ INSULATION | 2 |
| 23 | 7432 | PP14 PCB, MAIN | 1 |
| 24 | 7433 | HC14 SENSOR MODULE, HUMIDITY W/ HARNESS | 1 |
| 25 | 7434 | NC14 KNOB, CONTROL | 1 |
| 26 | 7435 | RI14 ISOLATOR, RUBBER | 4 |
| 27 | 7436 | AF14 FOOT, RUBBER, ADJUSTABLE | 4 |
| 28 | 7437 | DS14 SWITCH, DOOR | 1 |
| 29 | 7438 | CT14 PANEL, CONTROL | 1 |
| 30, 31 | 7439 | MH14 GROMMET, RUBBER, CLOSED, 7/8" OD | 1 |
| 32 | 7440 | RH14 POT, RH ADJUSTMENT, w/ HARNESS | 1 |
| 33 | 7441 | TP14 PANEL, TOP w/ INSULATION | 1 |
| 34 | 7442 | HG14 HANGER | 4 |
| 35 | 7443 | TS14 TERMINAL STRIP, TB-10, 5 AMP | 1 |
| 36 | 7444 | TS14-1 TERMINAL STRIP, TB-6, 30 AMP | 1 |
| 37 | 7445 | RC14-1 CAPACITOR, (COMPRESSOR) | 1 |
| 38 | 7446 | DF14 DEFROST SENSOR w/ HARNESS | 1 |