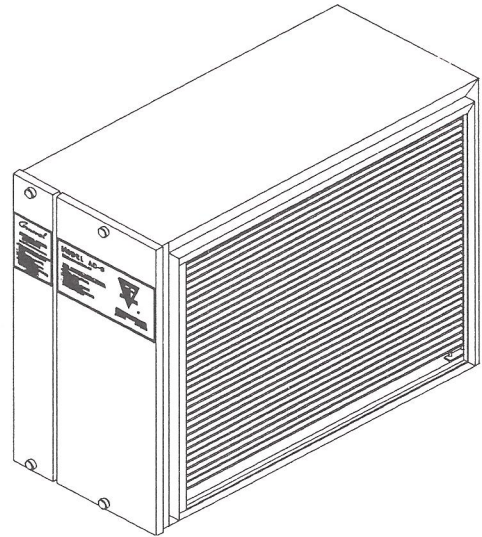


INSTALLATION INSTRUCTIONS

General

MODEL AC-3 HIGH EFFICIENCY AIR CLEANER AND ACTIVATED CARBON AIR PURIFIER

FOR INSTALLATION IN THE RETURN
AIR DUCT OF ANY FORCED AIR
HEATING AND COOLING SYSTEM



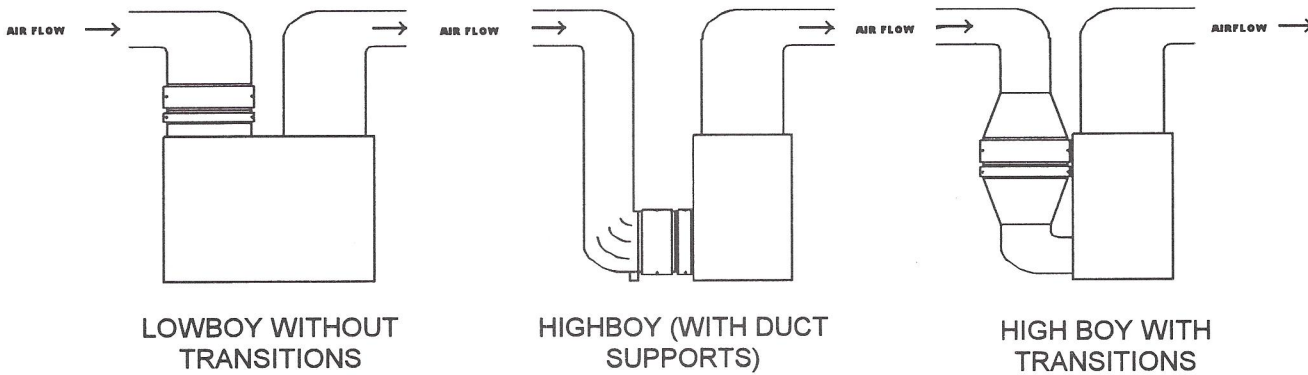
This air cleaner/purifier is designed for use in systems up to 2000 CFM. For higher airflows additional units may be required. Orient the cabinet so that the air purifier is downstream of the particulate filter to prevent the carbon columns from becoming clogged with household dust.

IMPORTANT: A 26 INCH CLEARANCE MUST BE ALLOWED FOR REMOVAL OF THE MEDIA CARRIERS FROM THE CABINET.

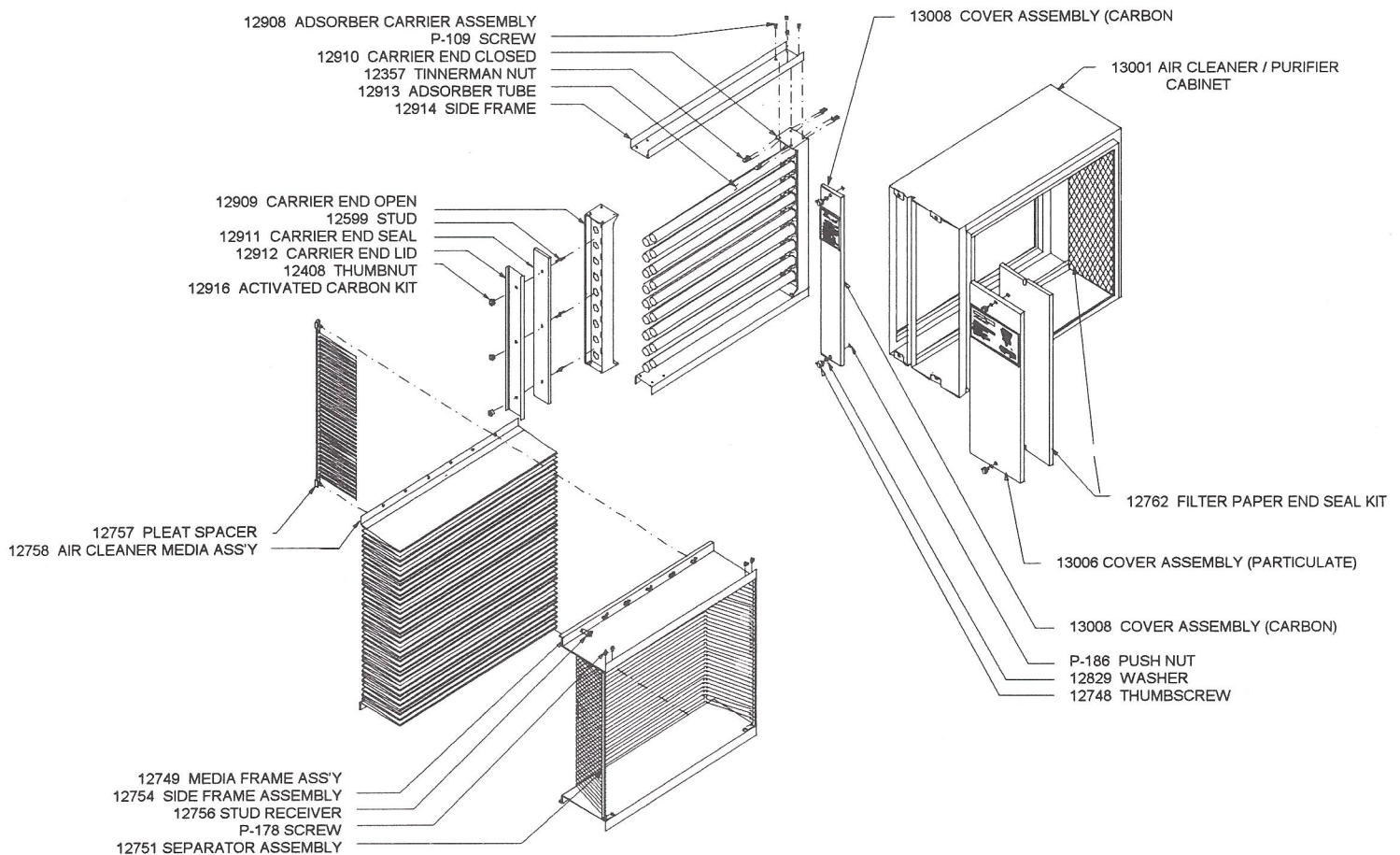
1. Loosen thumb screws and remove front covers.
2. Slide media frame assembly and carbon carrier from cabinet.
3. Turn off electricity to furnace.
4. Remove and discard existing furnace air filter.
5. Install cabinet in return air system. Be sure to follow airflow direction arrows on interior of cabinet. Duct supports are recommended to support weight of cabinet. See typical installations.
6. Refer to media change instructions on side of media frame for installation of air cleaner media and pleat spacers. Fill carbon media carrier with carbon from carbon kit. Follow instructions on carrier lid.
7. Slide the media frame into the cabinet. Be sure the airflow arrow on the media frame is in the same direction as the arrow in the cabinet. The plastic pleat spacers are always on the downstream side of the filter media. Slide carbon media carrier into cabinet. Replace covers.
8. If a condition indicator is to be used, install on a vertical duct surface between the air cleaner/purifier and the furnace blower.

INSTALLER: PLEASE FILL OUT AND MAIL GUARANTEE CARD AFTER INSTALLATION IS COMPLETE. LEAVE MAINTENANCE CARD AND INSTALLATION INSTRUCTIONS WITH HOME OWNER.

TYPICAL INSTALLATIONS



PARTS LIST



WHEN ORDERING PARTS, REFER TO THE ABOVE LIST OF PARTS NAMES AND PARTS NUMBERS

GENERAL FILTERS, INC.

43800 GRAND RIVER AVE.
NOVI, MI 48376-8025

39 CROCKFORD BLVD.
SCARBOROUGH, ONTARIO M1R 3B7