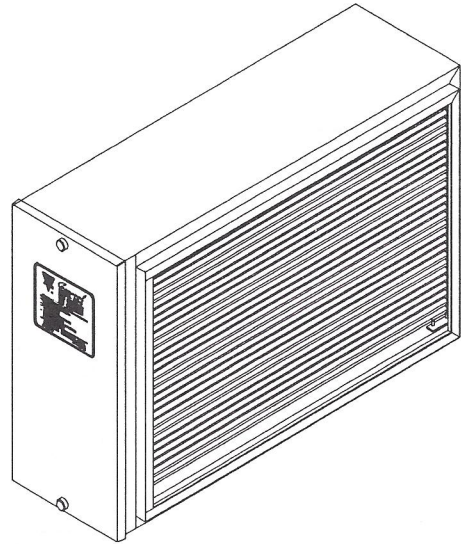


INSTALLATION INSTRUCTIONS

General

MODEL AC-4 HIGH EFFICIENCY AIR CLEANER

FOR INSTALLATION IN THE RETURN
AIR DUCT OF ANY FORCED AIR
HEATING AND COOLING SYSTEM



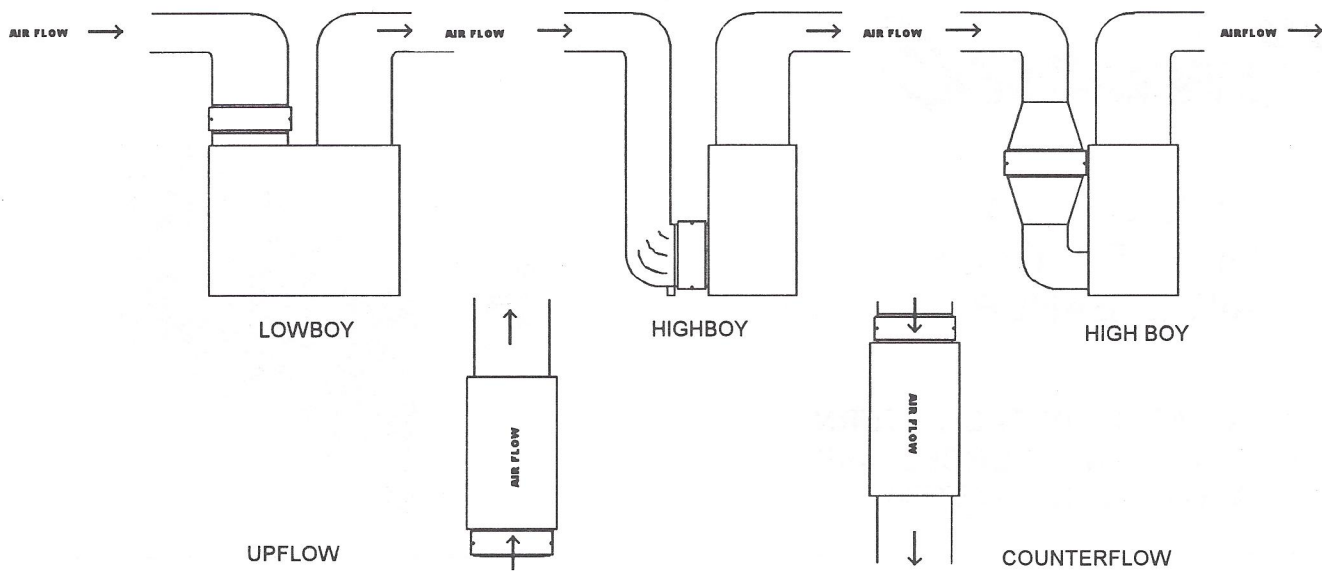
This air cleaner is designed for use in systems up to 1400 CFM. For higher airflows additional units or use of the AC-1 may be required.

IMPORTANT: A 26 INCH CLEARANCE MUST BE ALLOWED FOR REMOVAL OF THE MEDIA FRAME ASSEMBLY FROM THE CABINET.

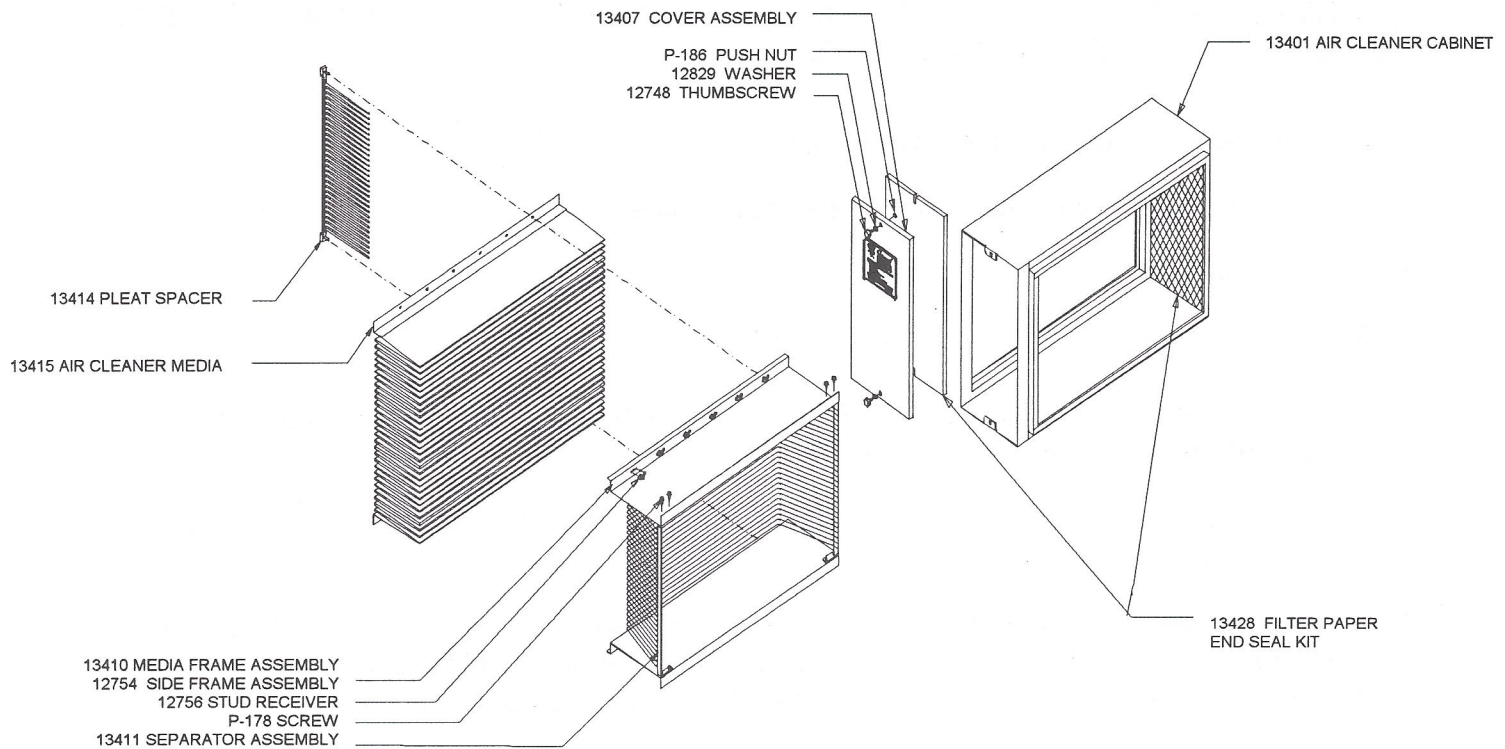
1. Loosen thumb screws and remove front cover.
2. Slide media frame assembly from air cleaner cabinet, discard packing material.
3. Turn off electricity to furnace.
4. Remove and discard existing furnace air filter.
5. Install cabinet in return air system. Properly install airflow direction arrows on interior of cabinet. See typical installations.
6. Refer to media change interactions on side of media frame for installation of air cleaner media and pleat spacers.
7. Slide the media frame into the cabinet. Be sure the airflow arrow on the media frame is in the same direction as the arrow in the cabinet. The plastic pleat spacers are always on the downstream side of the filter media. Replace cover and thumbscrews.
8. If a condition indicator is to be used, install on a vertical duct surface between the air cleaner and the furnace blower.
9. Turn on furnace and check performance of all equipment.

INSTALLER: PLEASE FILL OUT AND MAIL GUARANTEE CARD AFTER INSTALLATION IS COMPLETE. LEAVE MAINTENANCE CARD AND INSTALLATION INSTRUCTIONS WITH HOME OWNER.

TYPICAL INSTALLATIONS



PARTS LIST



WHEN ORDERING PARTS, REFER TO THE ABOVE LIST OF PARTS NAMES AND PARTS NUMBERS

GENERAL FILTERS, INC.

43800 GRAND RIVER AVE.
NOVI, MI 48376-8025

39 CROCKFORD BLVD.
SCARBOROUGH, ONTARIO M1R 3B7