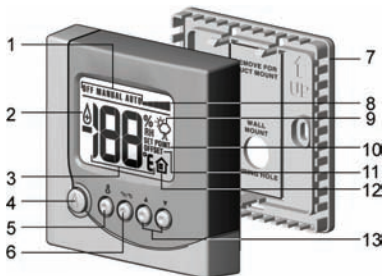


INTRODUCTION

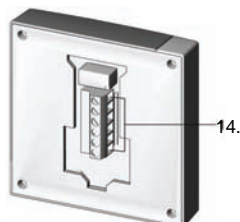
Thank you for selecting the GENERALAire E2 Humidistat. A professional technician should install the unit.

FRONT VIEW



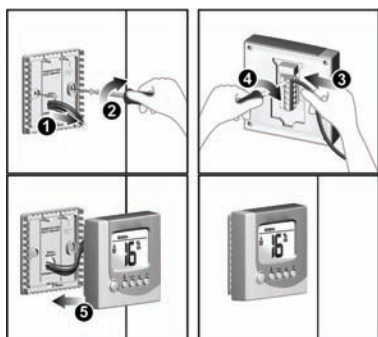
1. Operation modes
2. Moisture is being added into the environment
3. Humidity / temperature reading
4. : Toggle between **OFF**, **MANUAL** and **AUTO** modes (if outdoor sensor is connected)
5. : Toggle between indoor humidity and indoor / outdoor temperature displays (if outdoor sensor is connected)
6. °C / °F: Select temperature unit
7. Wall mount cover. Squeeze top-bottom to open.
8. Humidity index chart
9. Outdoor temperature reading is displayed
10. Temperature / humidity setting is displayed
11. Temperature / humidity offset is displayed
12. Indoor temperature / humidity reading is displayed
13. : Increase / decrease setting; enter humidity / temperature offset setting

BACK VIEW



14. Removable terminal block for wire connections.

TO MOUNT THE UNIT



NOTES

- To remove the humidistat from the base, squeeze the louvered base at the top and bottom.
- To remove the humidistat from the wall, lift up on the humidistat and pivot top away from wall
- Before wall mounting, please remove the gasket.
- Before return air duct mounting, please remove the breakout piece. Remove terminal block for wiring.
- If return air duct mounting, route wires between humidistat and base.

MOUNT THE OUTDOOR SENSOR

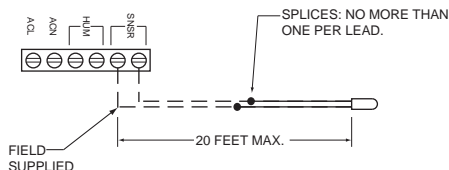
Mount the sensor outside the house:

- Do not mount on South side of the house or in direct sunlight.
- Place at least 4 feet away from any exhaust vent.
- If in air intake, place 1 foot or closer to outside wall.
- Place at least 6" higher than possible snow.
- Do not route sensor wire near high voltage wires.

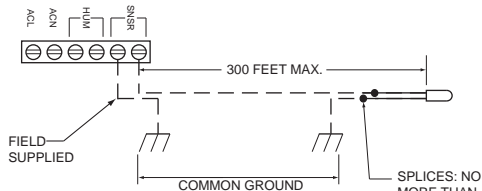
WIRING

- If Outdoor Temperature is over 50°F or 10°C, a safety stop will prevent calling for humidity. Test circuit by removing one outdoor sensor wire.
- Confirm correct outdoor temperature reading. If temperature reading is high, use Diagram for GREATER THAN 20 FEET.

WIRING OUTDOOR SENSOR LESS THAN 20 FEET

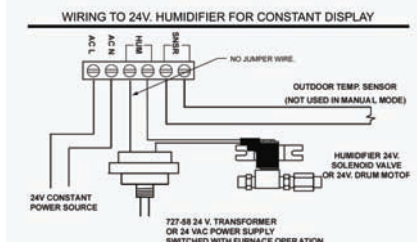


WIRING OUTDOOR SENSOR GREATER THAN 20 FEET

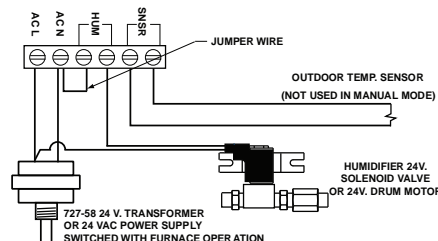


COMMON GROUND examples:
Water pipe, metal duct, household electrical safety ground, conduit.
The wire from the unit and the wire from the sensor must both be connected to the same common ground, for example both to water pipe OR both to the household safety ground.

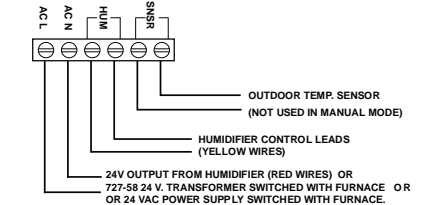
NOTE: Separate sensor and common ground by at least 4 inches.
Ex: Don't lay the wire on the metal conduit or duct used for the ground.



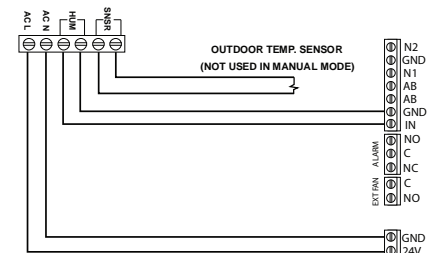
WIRING TO 24V. BYPASS HUMIDIFIER



WIRING TO 1137, 1000 POWER HUMIDIFIER



WIRING TO DS-15, RS-15, CS-15, DS-35, RS-35, CS-35 ELITE STEAM HUMIDIFIER



TO USE THE UNIT

Press to select **OFF**, **MANUAL** or **AUTO** mode (if outdoor sensor is connected).

- **OFF mode:** The humidifier is turned off.
- **MANUAL mode:** The E2 will work to maintain the single humidity selected. You can set your desired humidity level by pressing or . The humidifier will turn ON or OFF according to your manual setting. (The humidifier will operate when the measured relative humidity falls more than 2% below the set point.) Humidity will have to be lowered when weather is colder or if condensation is suspected.

Suggested Setting Outdoor Temperatures

15%	-20°F	-29°C
20%	-10°F	-23°C
25%	0°F	-18°C
30%	+10°F	-12°C
35%	+20°F	-7°C
40%	+30°F	-1°C

- **AUTO mode:** The E2 will automatically raise the humidity as the outdoor temperature increases. This provides the highest possible humidity. The E2 will automatically lower the humidity as temperatures drop. This minimizes the risk of condensation on cold surfaces like windows. You can adjust the Auto Humidity Index Set Point from 0 (low) to 10 (high) by pressing or . The Humidity Index is based on the outdoor temperature and indoor humidity. The humidifier will switch ON/OFF according to the calculated auto humidity index set point. Lower Index settings are for older homes with less insulation and vapor barriers. Higher Index settings are for newer homes with complete vapor barriers, triple pane windows and high R-value insulation. If condensation occurs reduce Index setting by 2 points until condensation stops.

NOTE If the outdoor temperature sensor fails, flashes and the unit will default to **MANUAL mode**.

- To toggle between indoor / outdoor temperature

and indoor humidity: Press .

- To change the temperature unit: Press °C / °F.
- To set the temperature / humidity offset in **MANUAL** or **AUTO** mode:
 1. Simultaneously press and when viewing the temperature or humidity reading.
 2. Use or to change the setting (-3 to 3).
 3. Press and simultaneously or wait 5 seconds to confirm and move onto the next setting.

- **Lo** or **Hi** will flash on the display when:

MEASUREMENT	LO	HI
Indoor temp.	Below 0°C (32°F)	Above 99°F (37°C)
Outdoor temp.	Below -40°C (-40°F)	Above 50°C (122°F)
Humidity	Below 10%	Above 90%

- If power is lost, current settings are retained.

PRECAUTIONS

This product is engineered to give you years of satisfactory service. Here are a few precautions:

- Do not allow excess humidification. Excess humidity can cause condensation and enable mold and mildew growth.
- Do not tamper with the unit's internal components. The unit contains no user-serviceable parts.
- The contents of this manual may not be reproduced without the permission of the manufacturer.

NOTE The technical specifications for this product and the contents of the user manual are subject to change without notice.

SPECIFICATIONS

TYPE	DESCRIPTION
Dimensions H x W x D	84 x 84 x 20 mm (3.3 x 3.3 x 0.8 in.)
Weight	95.4 g (3.4 ounces)
Temperature unit	°F / °C
Temperature operating range	32°F to 99°F -0°C to 37°C
Temperature resolution	2°F (1 °C)
Humidity range	10% to 60%
Humidity resolution	1%
Power	18-30 Volts, AC

TECHNICAL SUPPORT

General Filters, Inc. Tel: 248-476-5100
43800 Grand River Engineering@GeneralFilters.com
Novi, MI 48375 Form 13144 REV. F.